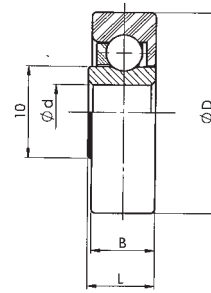
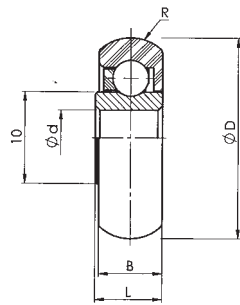
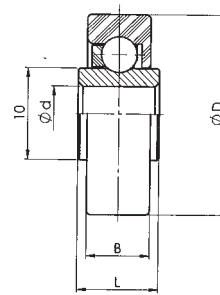
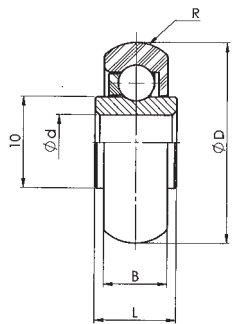


## Acetal Bearings with Steel Inner Rings

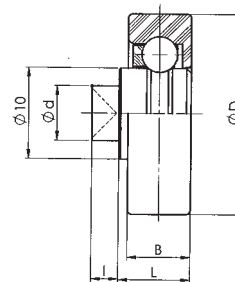
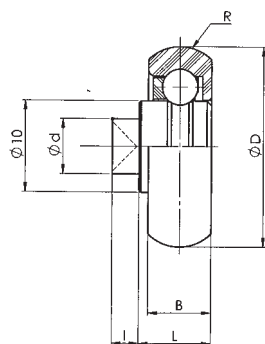
K. mit Außenring aus Acetalharz, Innenring aus Stahl - R. avec Extérieur de Resine Acetaliqque, Interieur en Acier - R. con Exterior de Resina Acetálica, Interior de Acero



Tipo 1



Tipo 2

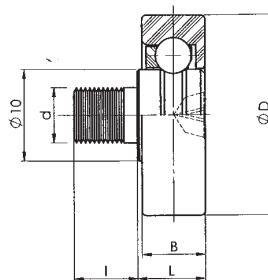
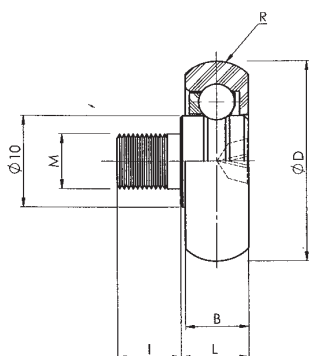


Tipo 3

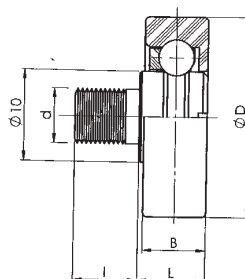
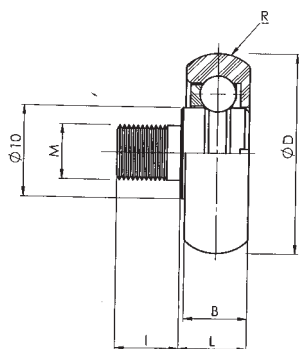


## Acetal Bearings with Steel Inner Rings

K. mit Außenring aus Acetalharz, Innenring aus Stahl - R. avec Extérieur de Resine Acetalique, Intérieur en Acier - R. con Exterior de Resina Acetálica, Interior de Acero



Tipo 4



Tipo 5

Nº	REFEREN	D	B	R	d	L	I	TIPO	OBSERVACIONES
1408	96-0070	19	6		5	6		1	FULL COMPLEMENT BALL ARRANGEMENTS
1409	96-0062	22	7		6	7		1	FULL COMPLEMENT BALL ARRANGEMENTS
1410	96-0104	22	7		6	7,5		1	
1411	96-0081	24	7		6	7		1	
1412	96-0095	24	7		5	9,5		1	
1413	96-0085	19	6		5	10		2	FULL COMPLEMENT BALL ARRANGEMENTS
1414	96-0071	22	7		6	8		2	
1415	96-0088	25	7	5	6	11,5		2	
1416	96-0075	25	7		6	11,5		2	
1417	96-0069	19	6	5	5	6,5	3,5	3	FULL COMPLEMENT BALL ARRANGEMENTS
1418	96-0069	19	6		5	6,5	3,5	3	FULL COMPLEMENT BALL ARRANGEMENTS
1419	96-0033	22	7	5	6	8	2,7	3	
1420	96-0033	22	7		6	8	2,7	3	
1421	96-0096	24	7	5	6	8	4	3	
1422	96-0096	24	7		6	8	4	3	
1423	96-0098	26	7	5	6	9,5	3,5	3	
1424	96-0098	26	7		6	9,5	3,5	3	
1425	96-0059	19	6	5	M6	8,5	6,6	4	FULL COMPLEMENT BALL ARRANGEMENTS
1426	96-0092	19	6		M6	7,5	8	4	FULL COMPLEMENT BALL ARRANGEMENTS
1427	96-0072	22	7	5	M6	7,5	8	4	
1428	96-0035	22	7		M6	7,5	8	5	
1429	96-0068	24	7		M6	7,5	8	5	
1430	96-0067	26	7		M6	7,5	8	5	
1431	96-0078	30	7		1/4 20h <sup>+</sup>	8	6	5	