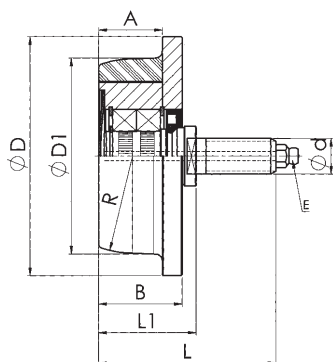
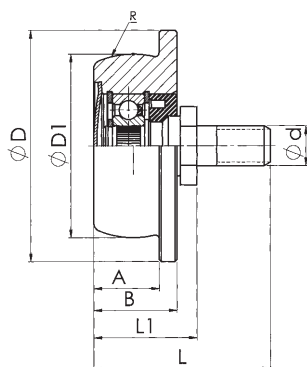


# Cranes

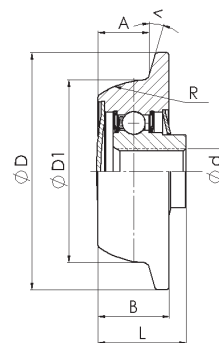
Krane  
Grues  
Gruas



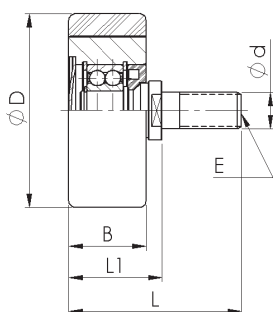
Pos. 1



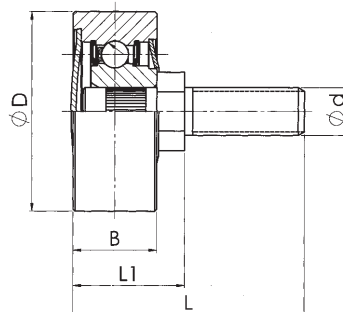
Pos. 2



Pos. 3



Pos. 4



Pos. 5

Nº	REFEREN	D	D1	B	R	A	d	d1	L	L1	E	<	POS.
1277	85-0131	95	78	34	39	27	M16		76	41	NO		1
1278	85-0143	120	98,5	42	48,75	32	M18		89	49	SI		1
1279	85-0155	120	100	42	49,5	30	M18		89	49	NO		1
1280	85-0146	58	46	21	23	16,5	M10		44,5	26	NO		2
1281	95-1156	58	46	21	46	16,5	M10		56	26	NO		2
1282	85-0147	75	60	29	30	23	M14		66	36	SI		2
1283	85-0153	85	68	34	34	27	M16		76	41	SI		2
1284	95-0452	70	55	20	60	16	M12		23			8	3
1285	85-0150	85		34			M16		76	41	NO		4
1286	85-0142	120		42			M18		89	49	NO		4
1287	85-0145	120		42			M18		89	49	SI		4
1288	85-0149	50		21			M12		63	28			5
1289	95-1184	50		21			M12		58	28			5

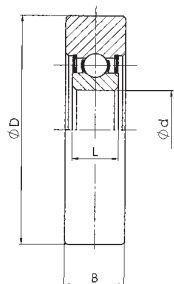


# Forklift trucks

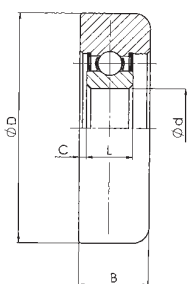
Hubstapler

Chariots élévateurs

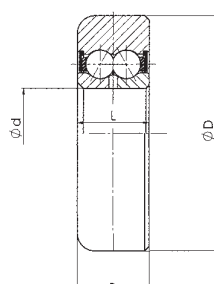
Carretillas elevadoras



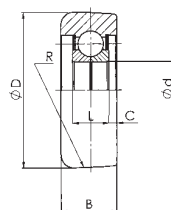
Pos. 1



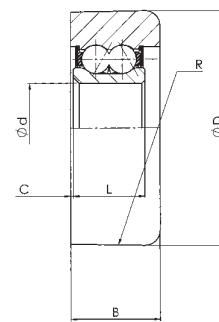
Pos. 2



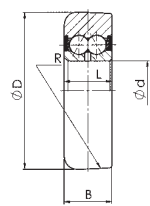
Pos. 3



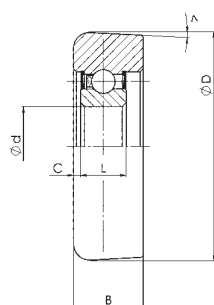
Pos. 4



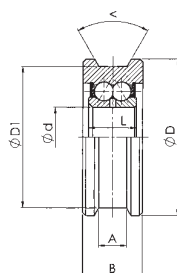
Pos. 5



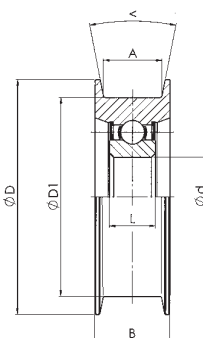
Pos. 6



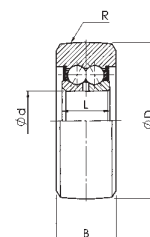
Pos. 7



Pos. 8



Pos. 9



Pos. 10

Nº	REFEREN	D	D1	B	d	L	C	R	<	A	POS.
1290	95-1119	126,5		29	40	23					1
1291	95-1106	70		22,3	30	16	3,5				2
1292	95-1118	91,7		24	30	19	0				2
1293	95-1153	105		36	50	20	5				2
1294	95-1137	96,5		33	35	30					3
1295	95-1138	97,5		33	35	30					3
1296	95-1216	77,5		28	28	18	4	250			4
1297	95-1217	88,5		33	35	29	4	400			4
1298	95-1075	89,2		36	35	27	3	1000			5
1299	95-1103	78,2		24	30	24		250			6
1300	95-1214	78,6		24	30	24		250			6
1301	95-1218	107,5		34	40	26		500			6
1302	95-1194	107,8		26	45	26		250			6
1303	95-1193	108,3		26	45	26		250			6
1304	95-1048	82		25	25	15	3,5		9		7
1305	95-0857	73	66,5	29	30	23,8			20	19	8
1306	95-1014	110	95	36	40	23			20	26	9
1307	95-1198	118	100	37,5	40	23			22	29	9
1308	95-0850	70,1		27	30	23,8		610			10
1309	95-1011	70,6		27	30	23,8		610			10

The references and dimensions appearing in this file are orientatives, being able to change without previous advice and with any responsibility for IRAUNDI, S.A.